

# Bassets<sup>®</sup> eDepreciation<sup>®</sup>



What is Bassets<sup>®</sup>eDepreciat on<sup>®</sup>?

*This Guide will answer many of your quest ons!*

Since 1990 Bassets Fixed Asset Sof ware has been meet ng and exceeding the needs of each and every one of its customers ranging from the small business to the enterprise market including many Fortune and INC 500 companies.

Since we are *only* in the fixed asset business, our goal is to listen not only to what our customers need but also to what they want and cont nue to improve our product accordingly. In June 2009 we responded with the launch of our latest product, Bassets®eDepreciat on®. Our customers, both end users and system administrators alike, will appreciate the ease of use expected from the Bassets® sof ware products as well as the increased performance and numerous enhancements made to Bassets®eDepreciat on®.

Bassets®eDepreciat on® has been developed with C#.NET and the .NET Framework. Your IT Department will appreciate how eDepreciat on® simplif es applicat on deployment without fear of af ect ng other exist ng applicat ons. Improvements in the install procedure ensure correct administrator privileges and proper separat on of the data from the sof ware applicat on.

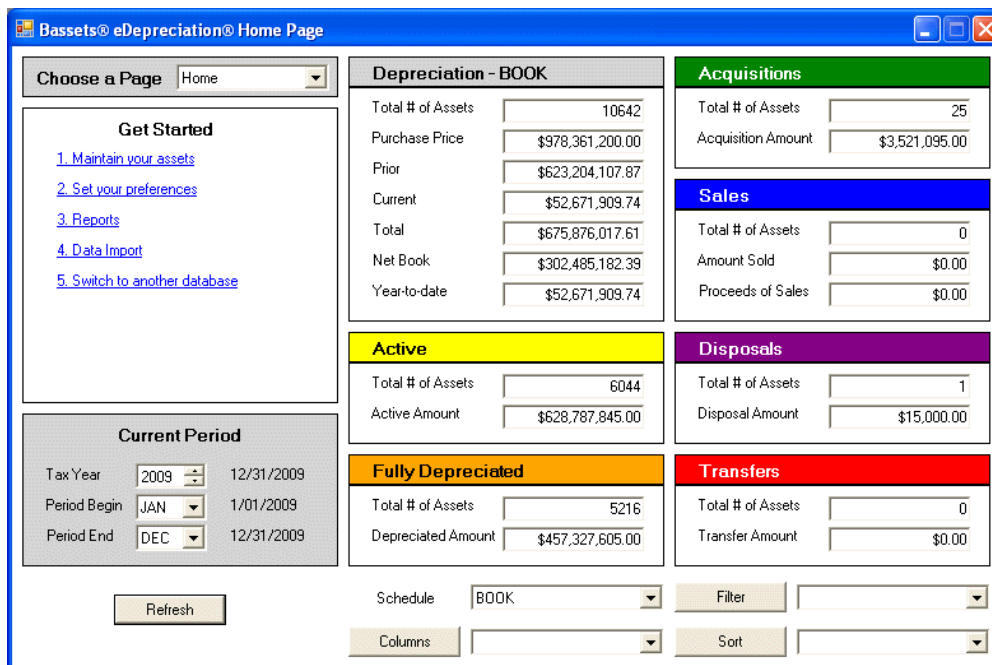
eDepreciat on® provides three dif erent Home or Landing pages determined by a User Preference setup. These pages provide the following views of the data:

1. Management Home Page presents seven dif erent summary views of the Capital Asset data as of the selected Current Period
2. Asset Administrator - Detail Home Page provides the Asset Administrator with an asset by asset detail view of the capital assets under management
3. Asset Manager—Row and Column View displays the asset data in a familiar spreadsheet file format

Addit onal system funct onality includes dynamic depreciat on calculat ons, the eliminat on of rounding errors, detailed audit trail, adjustment to basis, very f exible report ng and the export of selected data to an Excel file or a Microsoft SQL Server table.

### 1. Management Home Page

Deliver At-A-Glance Asset Information - Rather than sifting through numerous reports 7 summary views present critical data in a simple format  
 Quicker Results - Dynamic calculations allow for instant screen refresh for any accounting period(s) during current, prior and/or future tax years  
 Greater Visibility - Powerful drill-down to easily view detail behind the summaries



The Management Home Page presents seven different views of the Capital Asset Data as of the selected Current Period. The Current Period can be any accounting period(s) during the current tax year, prior tax year or future tax year. There are seven (7) views of the data:

Depreciation by schedule, such as Federal and State Tax, GAAP and/or any other user defined depreciation schedule. This provides the manager with "on the fly" summaries of Number of Assets, Purchase Price, Prior Accumulated, Current Period, Total Depreciation, Net Book Balance and Year to Date Depreciation.

Active - net book value greater than zero and current period depreciation

Fully Depreciated - net book value equal to zero at the end of period

Acquisitions - purchased during the selected Current Period

Sales - sold during the selected Current Period

Disposals - disposed during the selected Current Period

Transfers - transferred during the selected Current Period

## 2. Asset Administrator—Detail Home Page

Simplified Data Entry - Enter just 4 key pieces of information and eDepreciat on® will automatically populate the depreciation schedules based on your business rules

Enhanced Asset Movement - Complete or partial transfer and disposal with detailed audit trail and reporting

Superior Compliance - Intelligent data entry and built-in error checking ensure compliance with the latest Tax and GAAP regulations, IFRS compliance and meets all SOX Internal Control Requirements

Field	Value	Field	Value
Description	Manufacturing Tools	Purchase Price	\$25,000.00
Location	FRANKLIN SQUARE	Acquisition Date	12/1/1987
Location State	NY	Service Date	12/1/1987
Company	001	Class Code	30.2
Manager	Washington G.	Asset G/L	7150
Division	010	Accumulated G/L	0150
Department Code	40	Expense G/L	6250
Cubicle		Property Type	P
Vendor	Acme	Listed Property	N
PO Number	1987-003	More 4	
Mfg Serial	9854	More 5	
Company Asset No	87003	More 6	
Warranty Date	2/01/1990	More 7	
More 1		More 8	
More 2		More 9	
More 3		More 10	

The Detail Home Page provides the Asset Administrator with an asset by asset detail view of capital assets under management. The Asset Maintenance form also provides the Asset Administrator with the means to enter information for newly purchased capital assets using the "Business Rules" table to provide accurate data entry of depreciation parameters and general ledger codes.

This page also provides the user with "Life Cycle" functionality to Transfer, Dispose and Suspend assets with an associated Un-Do function when mistakes are made.

The Asset Maintenance form provides separate tabs to enter and track key values:

Fields - user definable and required fields that define the asset

Books - depreciation parameters for each schedule

Depreciat on Detail - monthly calculated numbers for the entire life of the asset

Act vity - any transfer, disposal or bonus depreciation information

Notes - free form user entered notes

Image - scanned image of the asset or any associated paperwork (i.e. Invoice)

### 3. Asset Manager - Row and Column View

Better Insight - Manage capital assets detail for the entire organization by month, quarter or year

Increased Agility - View smaller groups of assets in a company's hierarchy by any combination of fields

Reduce Costs - By instantly displaying meaningful information managers spend more time monitoring financials and less time managing data

AssetNo	description	Cost	Method	Date	Years	Months	Conv
1	Manufacturing To	25000.00	SL	12/01/1987	7	0	MIDM
2	Compaq Comput	5000.00	SL	04/01/1988	5	0	HALF
3	Application Softw	5000.00	SL	04/01/1988	3	0	HALF
4	Desks	15000.00	SL	01/01/1989	7	0	NEXT
5	Manufacturing Eq	30000.00	SL	02/01/1990	7	0	MIDM
6	Telephone Equip	1350.00	SL	01/01/1991	7	0	FULL
7	Special Tools	32000.00	SL	01/01/1992	3	0	NEXT
8	Land	100000.00	NONE	01/01/1993	0	0	
9	Office Building	100000.00	SL	01/01/1993	39	0	FULL
10	Office Building	250000.00	SL	02/01/1994	39	0	FULL
11	Manufacturing Eq	135750.00	SL	01/01/1995	7	0	HALF
12	Manufacturing Fa	37500.00	SL	01/01/1996	39	0	HALF
13	Manufacturing To	76000.00	SL	01/01/1997	7	0	HALF
14	IBM Computer	64000.00	SL	01/01/1998	5	0	NEXT
15	Application Softw	64000.00	SL	01/01/1998	3	0	NEXT
16	Leasehold Improv	275000.00	SL	02/01/1999	39	0	HALF
17	AS 400 Mod B...	15000.00	SL	01/01/2000	5	0	HALF

The Asset Manager - Row and Column View displays the asset data in a familiar spreadsheet like format. The selection and order of the asset rows and columns are determined by user defined filters, sorts and column definitions.

Create filters to Query or Drill Down into the data to analyze subsets of corporate capital asset data. The user has the ability to:

- Create filters with an easy to use plain "English" wizard

- Store filters for later use

- Join filters to create a more detailed Query or Drill Down

- Select only the necessary data columns required for the analysis

- Store Column Selections for later use

The Row and Column Grid provides the User with additional analytical tools to:

- Perform additional sorts on selected rows of data

- Use a Push Pin icon to lock a column when data is scrolled left or right

- Perform additional data filtering, both stored and Ad Hoc

## Addit onal System Funct onality includes:

Dynamic Depreciat on Calculat ons and Reports: This capability allows the User to run reports and/or perform depreciat on calculat ons for any account ng period(s) during a Historic, Current or Future Tax Year. This Dynamic Depreciat on also provides eDepreciat on® with exceptional performance when print ng standard reports and performing data drill down.

No More Rounding Errors: eDepreciat on® can perform Dynamic Depreciat on Calculat ons and Reports, as described above, without the associated rounding error problem. While most fixed asset systems can eliminated the rounding error with a monthly close, they all run into a problem when they need to generate historical and/or future account ng period reports and then at empt to return back to the current account ng period.

A very detailed Audit Trail has been developed for eDepreciat on® that tracks:

- Init al asset Data Entry
- The Edit of an exist ng asset record
- The Disposal and/or Un-Disposal of an asset record
- The Transfer and/or Un-Transfer of an asset record
- Depreciat on calculat on errors by asset record

The Adjustment to Basis funct on enables the user to make adjustments to the original cost of an asset at any t me during the asset's life. Bassets® will calculate the prior accumulated depreciat on that should have been booked before the ef ect ve date of the adjustment to basis. This prior accumulated depreciat on will then be added to the current period depreciat on. This allows the prior accumulated depreciat on prior to the ef ect ve date of the change to remain the same. While the prior accumulated depreciat on associated with the adjustment is added to the current period depreciat on " as of" the ef ect ve date of the adjustment.

Standard and Ad Hoc Reports:

- Export selected data for access by Report Writers, such as Crystal Reports.
- Export selected data to a spreadsheet, such as Excel, to generate an ad hoc report.

## Join us for a Demo of the Bassets®eDepreciat on®

A Better use of your Valuable Time: The demo will give you a feel for and understanding of the features and functionality of Bassets®eDepreciat on® in less than one hour.

Get *Your* Questions Answered in a straightforward and honest manner. We will give you a brief overview of Bassets®eDepreciat on® where you will be able to see live software on your computer screen. We will demonstrate asset entry, transfer, disposal of an asset, reporting and audit trail functionality of the software. You will have the opportunity to ask questions relating to your specific requirements and we can show you how we can solve your fixed asset needs!

Visit our web site at [www.bassets.net](http://www.bassets.net) to register for a web demo.

Trademark Bassets® and eDepreciat on® are registered trademarks of Decision Support Technology Inc. Other brands or products are the trademarks or registered trademarks of their respective holders and should be treated as such.

Copyright © 1990 - 2010 Decision Support Technology Inc. All Rights Reserved

Published June 2010

Decision Support Technology Inc.  
P.O. Box 665  
Ramsey, NJ 07446

Voice: (201) 995-9500  
Fax: (201) 327-5525

Website: [www.bassets.net](http://www.bassets.net)  
E-mail: [info@bassets.net](mailto:info@bassets.net)