



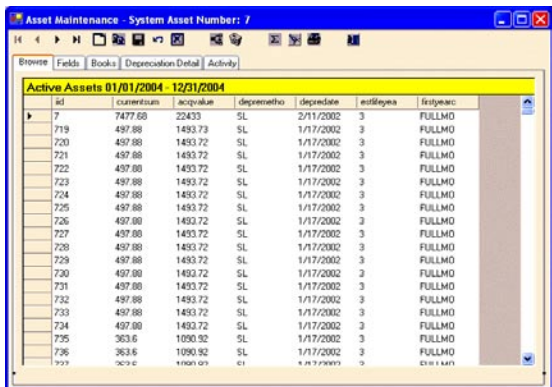
The Bassets Fixed Asset System has been on the market since 1991 with clients ranging from the small business to the enterprise market with many Fortune and Private 500 companies. Bassets eDepreciation is developed with C#.Net and the .Net Framework. Your IT department will appreciate how Bassets eDepreciation simplifies application deployment without the fear of affecting other existing applications.

The latest version of Bassets provides the user with three (3) Home pages as detailed below.



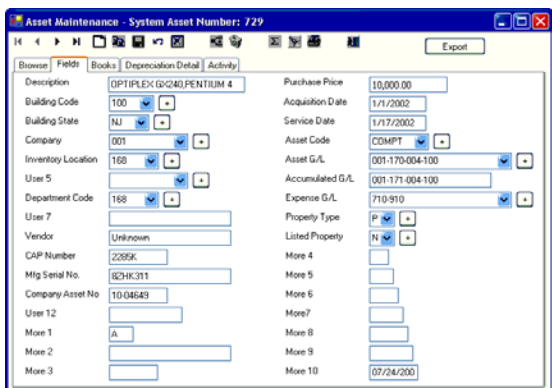
Management Home Page

- **Deliver At-a-Glance Information** – Rather than sifting through many reports, 7 summary views present critical data in a simple format
- **Quicker Results** – Dynamic calculations allow for instant screen refresh for any single period or group of periods
- **Greater Visibility** – Powerful drill-down feature to easily view detail behind the summaries



Fixed Asset Manager Home Page

- **Better Insight** – Manage capital assets for the entire organization by month, quarter or year
- **Increased Agility** – View smaller groups of assets in a company’s hierarchy, by any combination of fields
- **Reduce Costs** – By instantly displaying meaningful information, managers spend more time monitoring financials and less managing data



Data Administrator Home Page

- **Simplified Data Entry** – New assets records entered with as few as 4 key pieces of information and the system will automatically populate the rest based on your business rules
- **Enhanced Asset Movement** – Complete or partial transfer and disposal with detailed audit trail and reporting
- **Superior Compliance** – Intelligent data entry and built-in error checking ensure compliance with the latest Tax and GAAP regulations

Additional System Functionality includes:

- **Dynamic Depreciation Calculations and Reports:** This capability allows the user to run reports and/or perform depreciation calculations for any accounting period(s) during a Historic, Current or Future Tax Year. This Dynamic Depreciation also provides eDepreciation with exceptional performance when printing standard reports and performing data drill down.
- **No More Rounding Errors:** eDepreciation can perform Dynamic Depreciation Calculations and Reports, as described above, without the associated rounding error problem. While most fixed asset systems can eliminate the rounding error with a monthly close, they all run into a problem when they need to generate historical reports and then attempt to return back to the current accounting period.
- **A greatly enhanced Audit Trail** has been developed for eDepreciation that tracks:
 - Initial asset Data Entry
 - The Edit of an existing asset record
 - The Disposal and/or Un-Disposal of an asset record
 - The Transfer and/or Un-Transfer of an asset record
 - Depreciation calculation errors by asset record

All Audit Trail records include the User ID, Date and Time. Additionally, during an Edit, the original data element and what it was changed to during the Edit. Disposals and Transfers: related data elements changed during a transfer or disposal and the original data prior to the change. During the calculation of depreciation, the Audit Trail will list any incorrect depreciation data elements that generated the incorrect calculation.

- **Standard and Ad Hoc Reports:**
 - Export selected data for access by Report Writers, such as Crystal Reports.
 - Standard reports can be previewed, printed or saved as Adobe pdf.
 - Export selected data to a spreadsheet, such as Excel, to generate an ad hoc report.

Join Us for a Demo of The Bassets Fixed Asset System

- **A Better use of your Valuable Time:** The demo will give you a feel for and understanding of the features and functionality of the Bassets System in less than one hour.
- **Get your Questions Answered** in a straight forward and honest manner.
- **Visit our web site** at www.bassets.net to register for a web demo.

DECISION SUPPORT TECHNOLOGY
PO Box 665 • Ramsey, New Jersey 07446
Phone (201) 995-9500 • Fax (201) 327-5525
Web Site: www.bassets.net